

Sargent & Lundy Services:

- ❑ Substation Engineering & Design
- ❑ Technical Specifications for Material & Equipment
- ❑ Testing & Commissioning

Sargent & Lundy is teaming with Cianbro Corp. (Pittsfield, ME) to design and build five new substations for Central Maine Power as part of the Maine Power Reliability Program. Sargent & Lundy is a subcontractor to Cianbro for the engineering and pre-testing of the following substations:

- Albion
- Monmouth
- Raven Farm
- Larrabee
- Coopers Mills

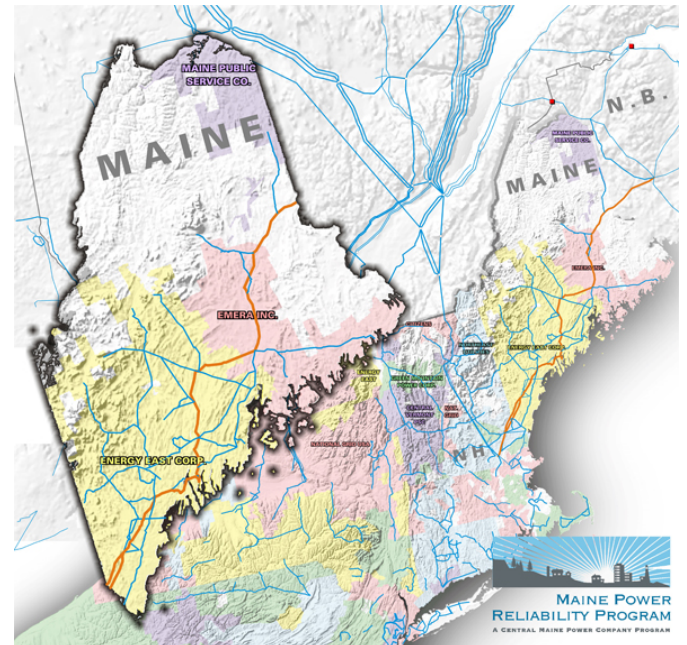
Three of the substations are 345/115/13.8-kV, one is a 345-kV switchyard and one is a 115/34/12-kV substation.

Sargent & Lundy's scope of work for the five substations includes complete engineering of the electrical, civil, and structural portions of the substations. Site development for the substations was engineered by the owner and awarded as a separate construction contract. Sargent & Lundy is also specifying all of the equipment and providing procurement support to Cianbro for the substations.

Four of the substations will connect into the Maine power grid through a new 345kV transmission backbone that will carry power from east central Maine down to southeastern New Hampshire. The existing transmission system, built in the early 1970s, will be upgraded to support current and future loads in Maine as well as the addition of wind generation in the region.

These greenfield, open-air substations include autotransformers, breakers, capacitor banks, inductors, and new control buildings. S&L is writing technical specifications and coordinating the procurement for all of the Cianbro-provided engineered equipment. The transformers and circuit breakers will be provided by the owner. S&L will be coordinating the new equipment testing at each substation, as well as writing of commissioning plans. The engineering is scheduled to be completed in

early 2013. The five substations have staggered in-service dates starting in 2011 through 2014.



Maine Power Reliability Program System Overview Map

Cianbro is an employee owned company and a leading health and safety innovator providing construction and service solutions to clients throughout North America. With the ability to self-perform all aspects of heavy industrial and civil construction projects, including power generation and transmission facilities for public utilities, private manufacturers and independent power producers.

Central Maine Power, an Iberdrola USA company, serves more than 600,000 customers in an 11,000 square mile service territory in southern Maine. The Maine Power Reliability Program encompasses \$1.5 billion in system improvements designed to keep the system operating reliably over the coming decades and to provide the infrastructure for the state's emerging wind, hydro, biomass, and tidal energy industries.