

TEHACHAPI RENEWABLE TRANSMISSION PROJECT

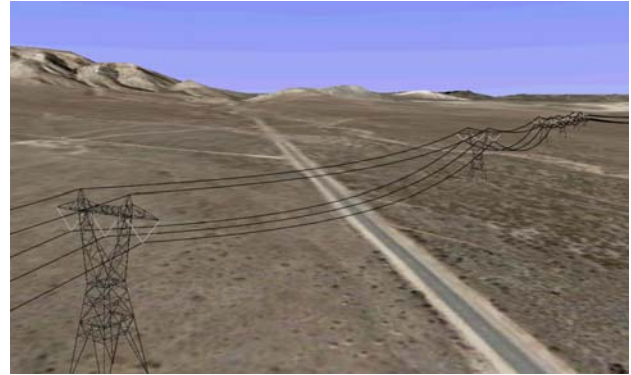


Sargent & Lundy Services:

- ❑ Preliminary Engineering & Permitting Support
- ❑ Transmission Line Engineering & Design
- ❑ Substation Engineering & Design
- ❑ Technical Specifications for Material & Construction

Southern California Edison
Rosemead, CA

Southern California Edison's (SCE) Tehachapi Renewable Transmission Project (TRTP) is the first major transmission project in California being constructed specifically to access multiple renewable generators in a remote renewable-rich resource area. The TRTP will include new and upgraded electric transmission lines and substations between eastern Kern County and San Bernardino County. The first three segments of the project were approved by the California Public Utilities Commission (CPUC) in March 2007 and construction is now underway.



Computer Simulation of 500-kV Structures

California has one of the most aggressive renewable energy programs in the country today. The state is first in the nation to set a mandate that renewable energy accounts for 20 percent of customers' energy supply by 2010. Existing and planned wind farms in an area of Kern County referred to as the Tehachapi Wind Resource Area will help meet this demand for more renewable power. In order to increase its ability to deliver this renewable wind energy to customers, SCE must upgrade its transmission lines and substations south of the Tehachapi Wind Resource Area by constructing the TRTP. These upgrades are also necessary to serve Southern California's overall growing demand for electricity.

Sargent & Lundy is also performing engineering for the expansion of SCE's 500/220-kV Vincent Substation, which is one of the interconnection points of the TRTP to the existing grid. This scope of work includes physical, structural, and electrical engineering and design to support the addition and relocation of 500-kV and 220-kV line terminations.

In 2006, Sargent & Lundy provided support for the preparation of SCE's Proponent's Environmental Assessment (PEA) for a portion of the project, including preliminary design and document preparation. In 2009, work began on detailed engineering for Segment 10, which consists of a new 18-mile, single-circuit, 500-kV line that will connect the proposed Whirlwind Substation to the Windhub collector substation. The scope of work includes structure spotting, material selection, foundation design and preparation of construction specifications.



Vincent 500/220-kV Substation Expansion

The detailed engineering for this project will be completed in 2010. The scheduled in-service date for TRTP Segment 10 is 2013.

Southern California Edison provides electric power to more than 13 million people in a service territory of 50,000 square miles encompassing 11 counties in central, coastal and southern California.

