

HARRY ALLEN – MEAD 500 kV TRANSMISSION LINE PROJECT



Sargent & Lundy Services:

- ❑ Construction Management
- ❑ Construction Quality Assurance
- ❑ Material Coordination
- ❑ Construction Contract Administration

Nevada Power Company
Las Vegas, NV

Sargent & Lundy is performing construction management services for Nevada Power Company's Harry Allen – Mead 500 kV Transmission Line Project. This project is the third transmission segment of the Centennial Project, which will connect over 3,000 MW of new generation to Nevada Power's customers.

The line includes 48 miles of single-circuit and 3 miles of double-circuit construction, extending from the Harry Allen Generating Station Substation northeast of Las Vegas to the Western Area Power Administration's Mead Substation in the El Dorado Valley south of Boulder City, NV.



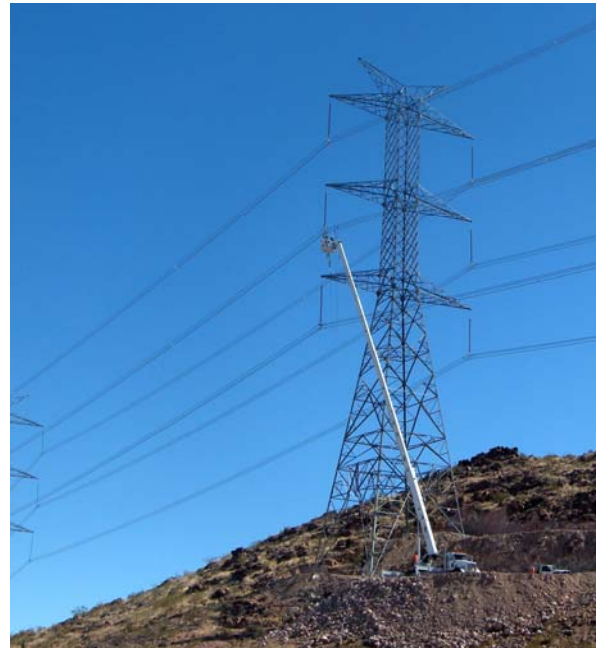
Installation of Implosive Deadend Fittings

S&L is providing the following services:

- Coordination of material receiving
- Inspection of access road construction, foundation installation, lattice tower and steel pole assembly and erection, wire stringing and clipping, and cleanup activities.
- Monitoring for compliance with project permits and grants of easements from federal agencies.
- Review of contractor progress and payment requests.

Triple-bundle 1590 ACSR conductors are supported on 197 lattice towers and 24 tubular steel structures, totaling almost 6,500 tons of steel. The route crosses rugged desert terrain, presenting challenges to structure access and foundation installation.

The Sargent & Lundy construction management team is located on-site throughout the duration of the project and includes personnel experienced in all aspects of transmission line projects.



Clipping-in Conductors on
Double-circuit Towers

Construction of the Harry Allen – Mead 500 kV Transmission Line began in September 2005 and is scheduled to be completed in December 2006.

